

**HARLOW LOCAL HIGHWAYS PANEL**  
**Wednesday, 28 March, 2018 at 10.00 am**  
**Council Chamber - Civic Centre**

**AGENDA**

1. Introductions and apologies
2. Declarations of interest  
  
Councillors' declaration of interest(if any) in relation to any items on the agenda.
3. Minutes of last meeting and matters arising (Pages 2 - 22)  
  
To agree minutes of the meeting held on 18 January 2018.
4. Public questions
5. Approved Works Programme. (Pages 23 - 26)
6. Potential Scheme List (Pages 27 - 36)  
  
Summary of schemes for potential consideration in 2017/18.
7. Highways Rangers (Page 37)
8. Section 106 Schemes
9. Any other business
10. Date of next meeting  
  
Dates to be confirmed

**MINUTES OF THE HARLOW LOCAL HIGHWAYS PANEL  
HELD ON**

18 January 2018

7.00 - 8.39 pm

**PRESENT**

**Committee Members**

Councillor Eddie Johnson, Essex County Council (Chair)  
Councillor Michael E Hardware, Essex County Council  
Councillor Clive Souter, Essex County Council  
Councillor Tony Durcan, Harlow District Council  
Councillor Danny Purton, Harlow District Council  
Councillor Mike Danvers, Harlow District Council

**Officers**

Rissa Long, Highways Liaison Officer, Essex County Council  
David Sprunt, Principal Area Transportation Co-ordinator, Essex County Council  
Lisa Thornett, Corporate Governance Support Officer

**Other Members**

Councillor Simon Carter, Harlow District Council  
Councillor Tony Hall, Harlow District Council  
Councillor Tony Edwards, Harlow District Council.

40. **WELCOME AND INTRODUCTIONS**

The Chairman welcomed all attendees to the meeting and invited Councillors and Officers to introduce themselves.

41. **APOLOGIES FOR ABSENCE**

Apologies of absence were received by Councillor Michael Garnett and Councillor Karen Clempner.

42. **DECLARATIONS OF INTEREST**

None.

43. **MINUTES OF LAST MEETING**

**AGREED** that the minutes of the meeting held on 20 September 2017 are agreed as a correct record with two exceptions:

Councillor Mike Danvers had given his apologies for the meeting and Councillor Karen Clempner was present at the meeting.

44. **MATTERS ARISING**

None.

45. **PUBLIC QUESTIONS**

None.

46. **APPROVED WORKS PROGRAMME**

Rissa Long explained that there had been a couple of amendments to the figures published in page 8 of the agenda.

Under the schemes prioritised by Rolling Programme the figure should read £120,000.

Under re-profiled schemes from 17/18 to 18/19 all should be delivered with the exception of one scheme.

**LHAR142011 – AGREED** that this item would be removed as a lot of the land in question was private land and would cause lengthy legal disputes.

**LHAR004001** – In the process of finalising the design for this item.

**LHAR155021** – The land has all been adopted and therefore the feasibility study has now been circulated to Members.

**LHAR163002** – we are investigating the possibility of installing a tiger crossing. It was agreed to hold some money back to cover the cost of change should it be liable.

**LHAR172001** – on site meetings have been taken place and some additional guard rails have been agreed with the school and will be completed in February half term.

Items **18 -23** should be completed by the end of this year.

**LHAR172003** – It was agreed that this scheme would proceed.

It was **AGREED** that the following schemes would be removed:

LHAR163003  
LHAR163004  
LHAR163008  
LHAR162010  
LHAR163020  
LHAR162014

47. **POTENTIAL SCHEME LIST**

Agreed **LHAR162001** would proceed with this measure.

It was agreed that **LHAR162015** and **LHAR162016** would be considered for repair other than replacement.

**LHAR162009** – will be considered a priority.

**LHAR172004** – AGREED that £60,000 would be spent in the first year and do one half. £37,500 would be allocated within the next budget.

Appended to these minutes is the spreadsheet for the schemes the members approved at the panel with the revised costs.

48. **HIGHWAY RANGERS**

It was agreed that Rissa would liaise with her contacts at the Council to ensure all enquiries, including Members enquiries are covered within the Rangers reports.

49. **SECTION 106 SCHEMES (FOR INFORMATION)**

None.

50. **MAJOR SCHEME UPDATE**

David Sprunt gave a presentation with is appended to the minutes.

51. **ANY OTHER BUSINESS**

Councillor Danny Purton advised the group of the changes made by North Essex Parking Partnership (NEPP).

- NEPP will only consider Traffic Regulation Orders (TRO) once a year in October. Any schemes that members would like submitted should be done as soon as possible. Councillor Purton will email all members.
- The Off Street Committee has been disbanded. Each district will now have to negotiate a service level agreement with NEPP or decide to take the issue back in house.

52. **DATE OF NEXT MEETING**

The date of the next meeting is Wednesday 28 March 2018 at 10am.

CHAIR OF THE PANEL

	A	B	C	D
1				
2				
3	Original Budget			<b>£243,500</b>
4	% allocated			<b>64%</b>
5				
6	Capital or Revenue	Ref	Location	Description
7	P1	RP	Parsloe Road junction with Phelips Rd and Markwell Wood	Implementation of scheme following on from feasibility study undertaken in 2015-16
39	P1		Tawneys Road on the approach to William Martin school	Advisory 20mph limit on the approach to the school
63	P1		<b>Hamstel Road- Zebra Crossing</b>	<b>Implementation of zebra crossing in the vicinity of the hospital as designed and advertised in 2017-18</b>
64	P1		Fourth Avenue junction with North Gate roundabout	Implementation of works as identified in the feasibility study undertaken in 2017-18 to look at redesigning the roundabout
65	P1		Pottersfield congestion parking	Installation of the Pottersfield parking works as designed in 2017-18

	E	F
1		
2		<b>2018-19 PRIORITIES</b>
3	<b>CAPITAL spent</b>	<b>£156,500</b>
4		
5		
6	<b>Problem</b>	<b>Scheme Category</b>
7	lack of deflection on the roundabout leading to vehicles approaching at greater speeds	Traffic Management
39		Traffic Management
63	<b>Pedestrians experiencing problems crossing the road to the hospital</b>	<b>Walking</b>
64	Existing roundabout is in a serious state of disrepair having been hit in numerous collisions and requires reconstruction both as a way of encouraging slower approach speeds but also to reduce the need for ongoing maintenance which would currently be needed	Traffic Management
65	The road is very congested with parked vehicles causing problems for emergency vehicles and the refuge truck to travel through	Traffic Management

	G	H	I	J
1				
2	<b>schemes not delivered in 2017-18</b>	<b>Rolling programme (P2)</b>	<b>Potential scheme value</b>	
3	<b>£0</b>	<b>£0</b>	<b>£244,500</b>	
4				
5				
6	<b>Scheme stage</b>	<b>Cost Code</b>	<b>Allocated Budget</b>	<b>RAG</b>
7	Implementation	LHAR162001	£84,500	<b>G</b>
39	Total scheme	LHAR172003	£12,000	<b>G</b>
63	Implementation	LHAR173002	TBC	<b>A</b>
64	Feasibility	LHAR162009	TBC	<b>A</b>
65	Design	LHAR172004	£60,000	<b>G</b>



	K	L
1		
2		
3	<b>CAPITAL remaining</b>	<b>£87,000</b>
4		
5		
6		
7		
39		
63		
64		
65		

# Harlow Major Schemes LHP Update

January 2018

David Sprunt

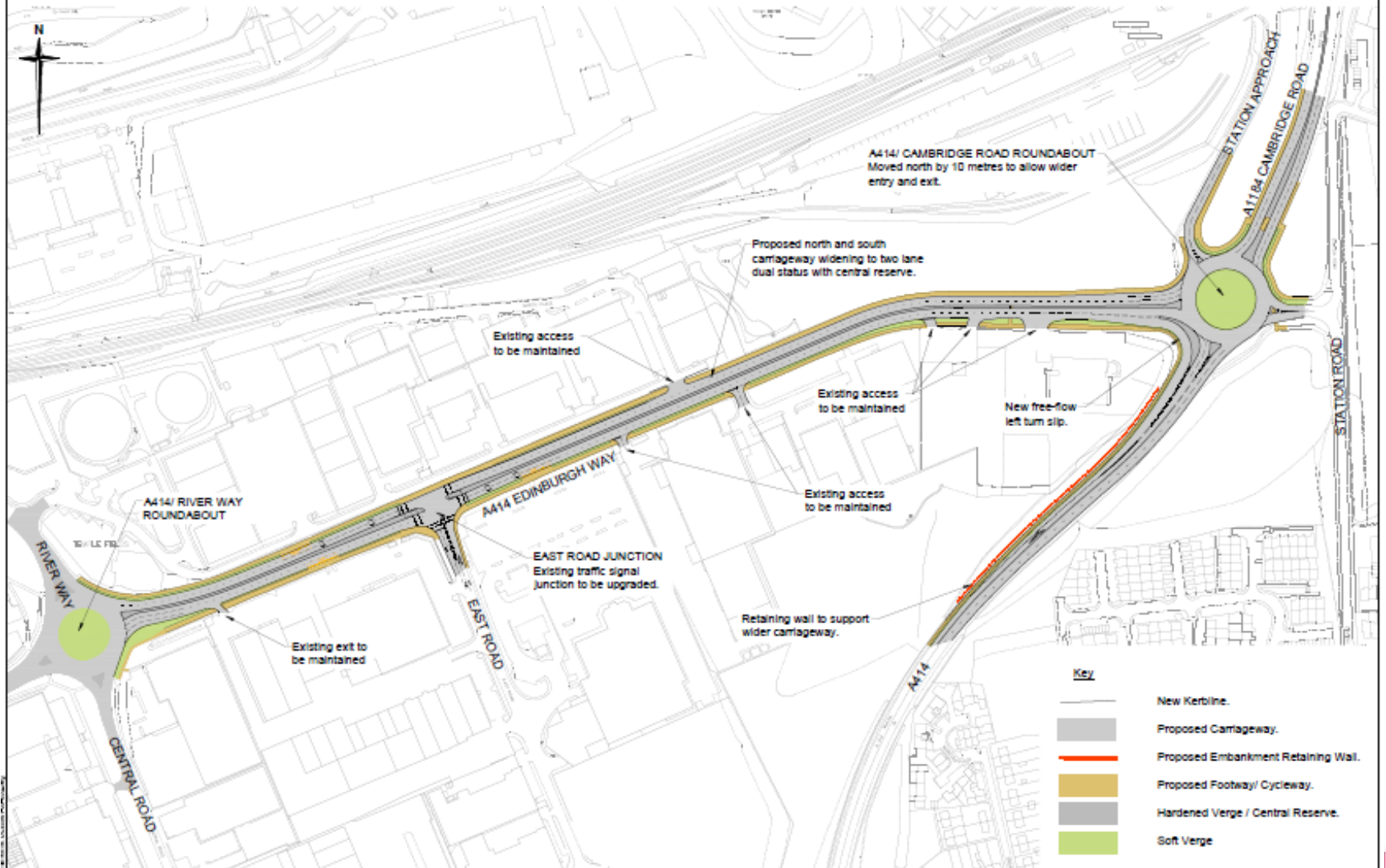
Transportation Strategy & Engagement

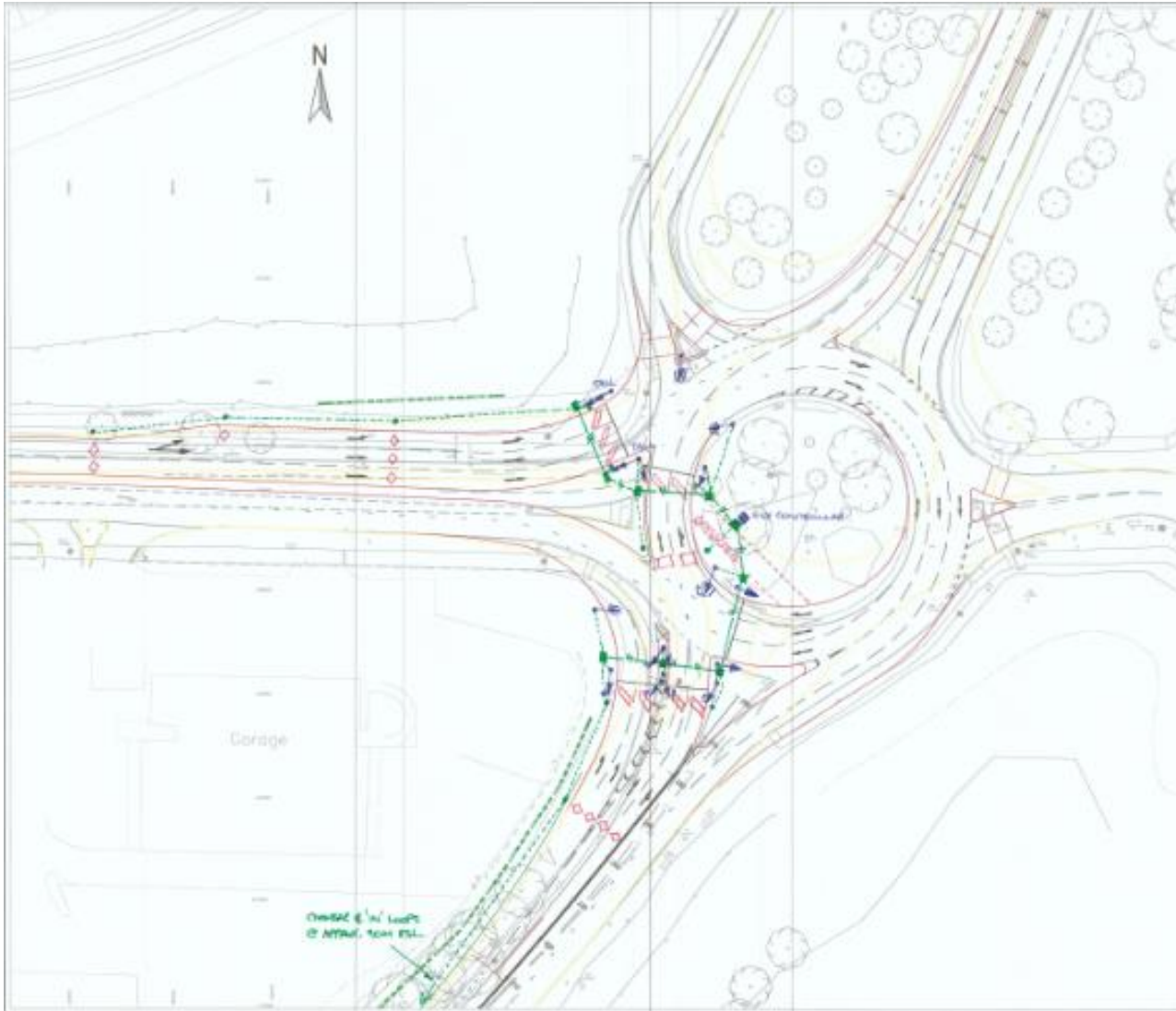


Essex County Council

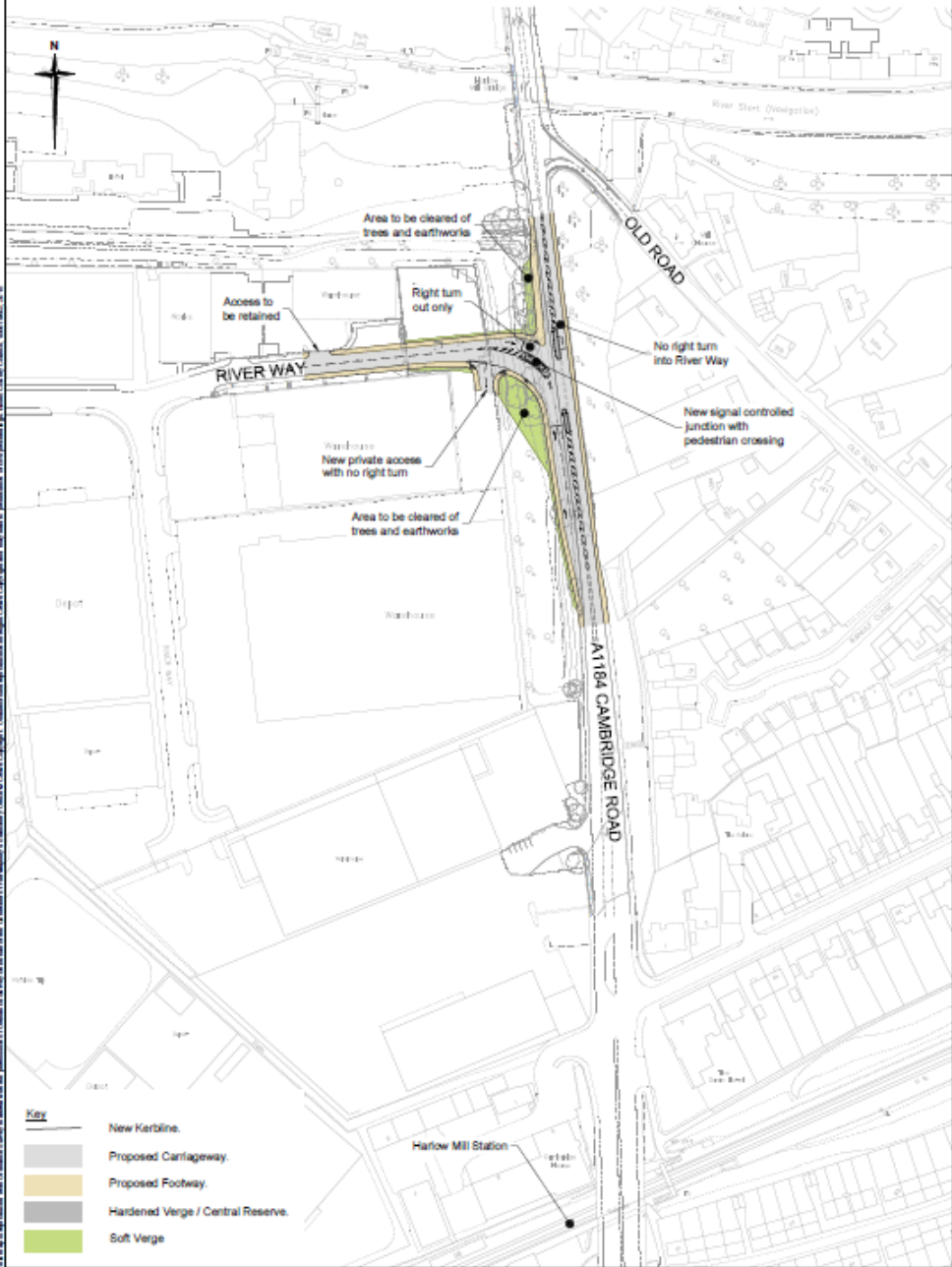
# Cambridge Road/Edinburgh Way

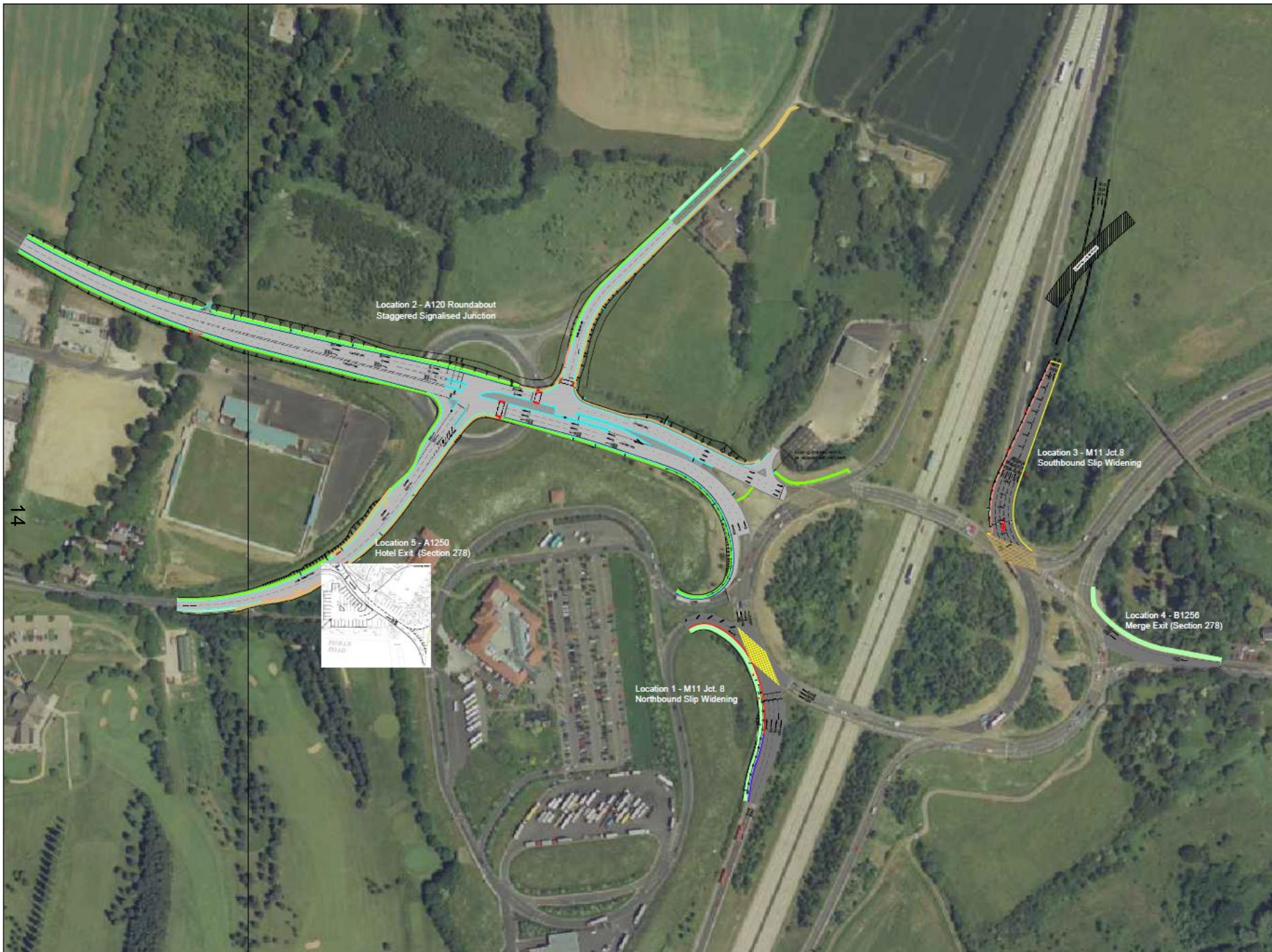
## A414 EDINBURGH WAY (INCLUDING DUALLING) / A1184 CAMBRIDGE ROAD PROPOSED SCHEME





# CAMBRIDGE ROAD ENTERPRISE ZONE PROPOSED SCHEME





Location 2 - A120 Roundabout  
Staggered Signalised Junction

Location 5 - A1250  
Hotel Exit (Section 278)



Location 1 - M11 Jct. 8  
Northbound Slip Widening

Location 3 - M11 Jct. 8  
Southbound Slip Widening

Location 4 - B1256  
Merge Exit (Section 278)

14

# Timescales

- A414 Enterprise Zone  
Complete and Opening March/April 2018
- A414 Cambridge Road/Edinburgh Way  
Complete Spring 2019
- Cambridge Road/River Way  
Start potentially Summer 2018, Complete Winter 2018/19
- M11 J8 Interim scheme  
Start Spring 2019, completion Spring 2020
- Visit Main ECC website, Major Schemes, for updates

# M11 J7a Update



# Next Steps

February 2018 HPGM – access track construction

May 2018 - Advance Works Ecology and Utilities

June 2018 - HPGM Diversion

Summer 2018 – Orders Exhibition

Jan 2019 Main Contract award

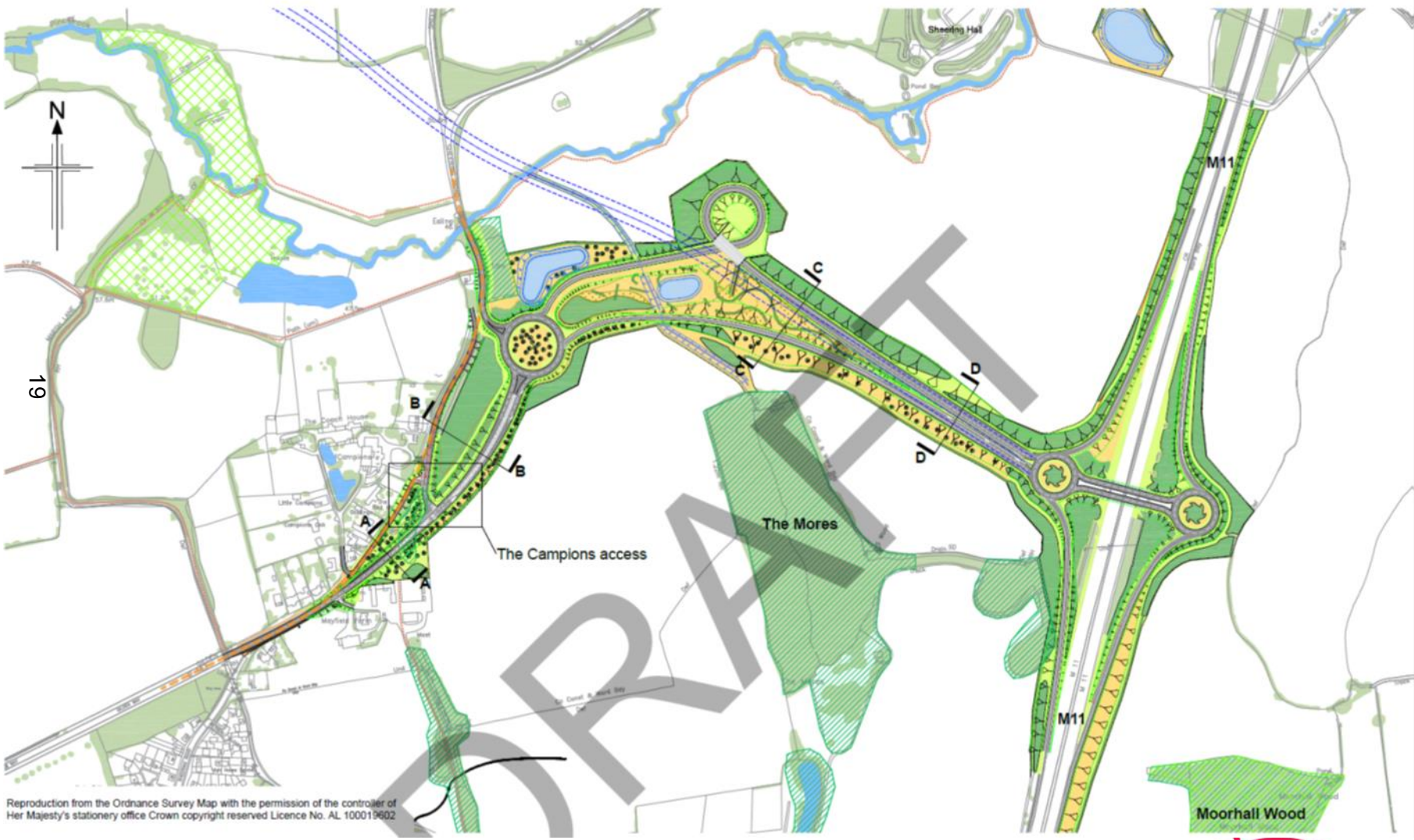
2019 summer - Possible start date for construction

2021 Summer - Completion of construction

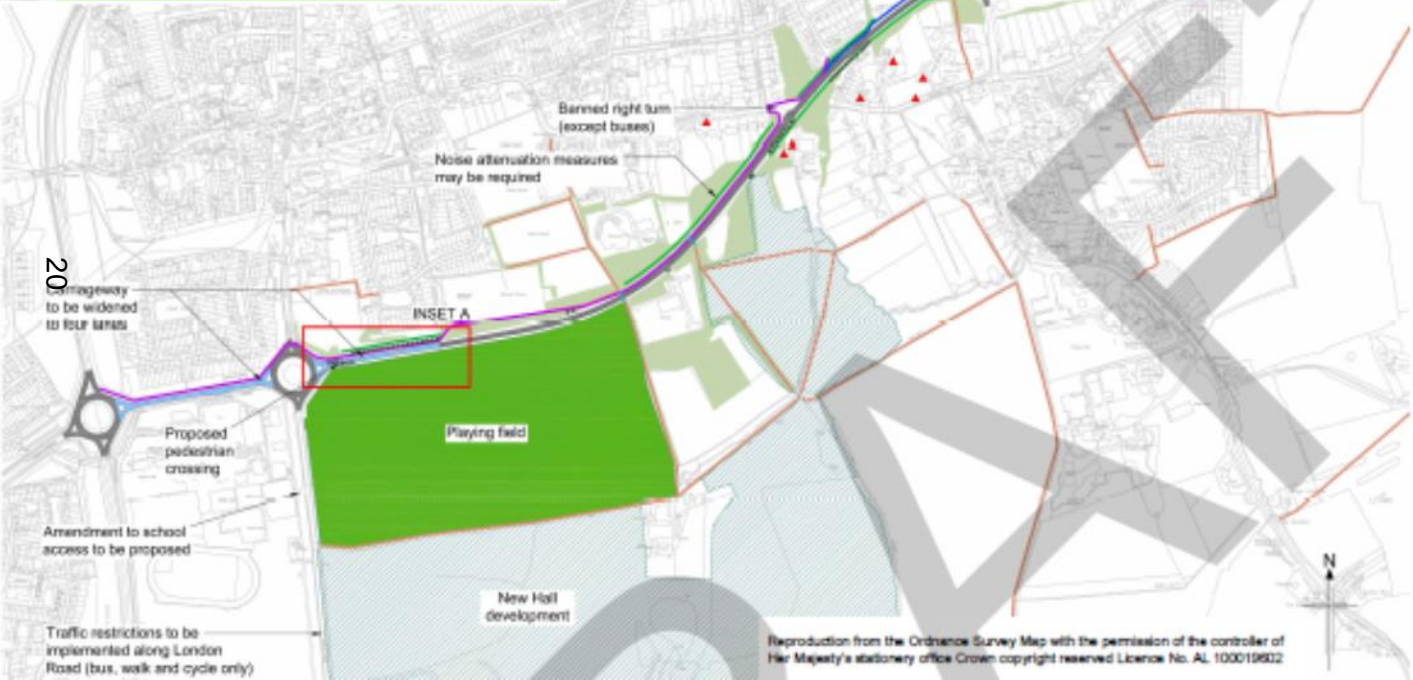
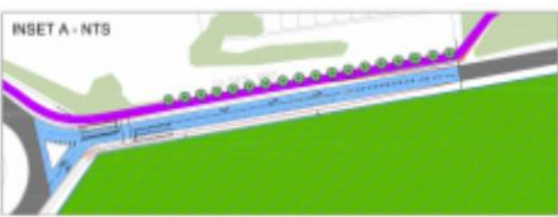
ECC website [www.essex.gov.uk/junction7a](http://www.essex.gov.uk/junction7a)

# Questions!





Reproduction from the Ordnance Survey Map with the permission of the controller of Her Majesty's stationery office Crown copyright reserved Licence No. AL 100019602



- LEGEND**
- Proposed resurfacing
  - Carriageway to be widened to dual carriageway
  - Harlowbury development area
  - New Hall development area
  - Proposed NMU route
  - Existing NMU route to be realigned
  - Public Footpath and Bridleway
  - Existing Vegetation
  - Playing field
  - Area to be landscaped
  - Noise attenuation measures may be required
  - Proposed planting
  - Listed Building
  - Pedestrian Crossing

20

Carriageway to be widened to four lanes

Proposed pedestrian crossing

Amendment to school access to be proposed

Traffic restrictions to be implemented along London Road (bus, walk and cycle only)

Banned right turn (except buses)

Noise attenuation measures may be required

INSET A

Playing field

New Hall development

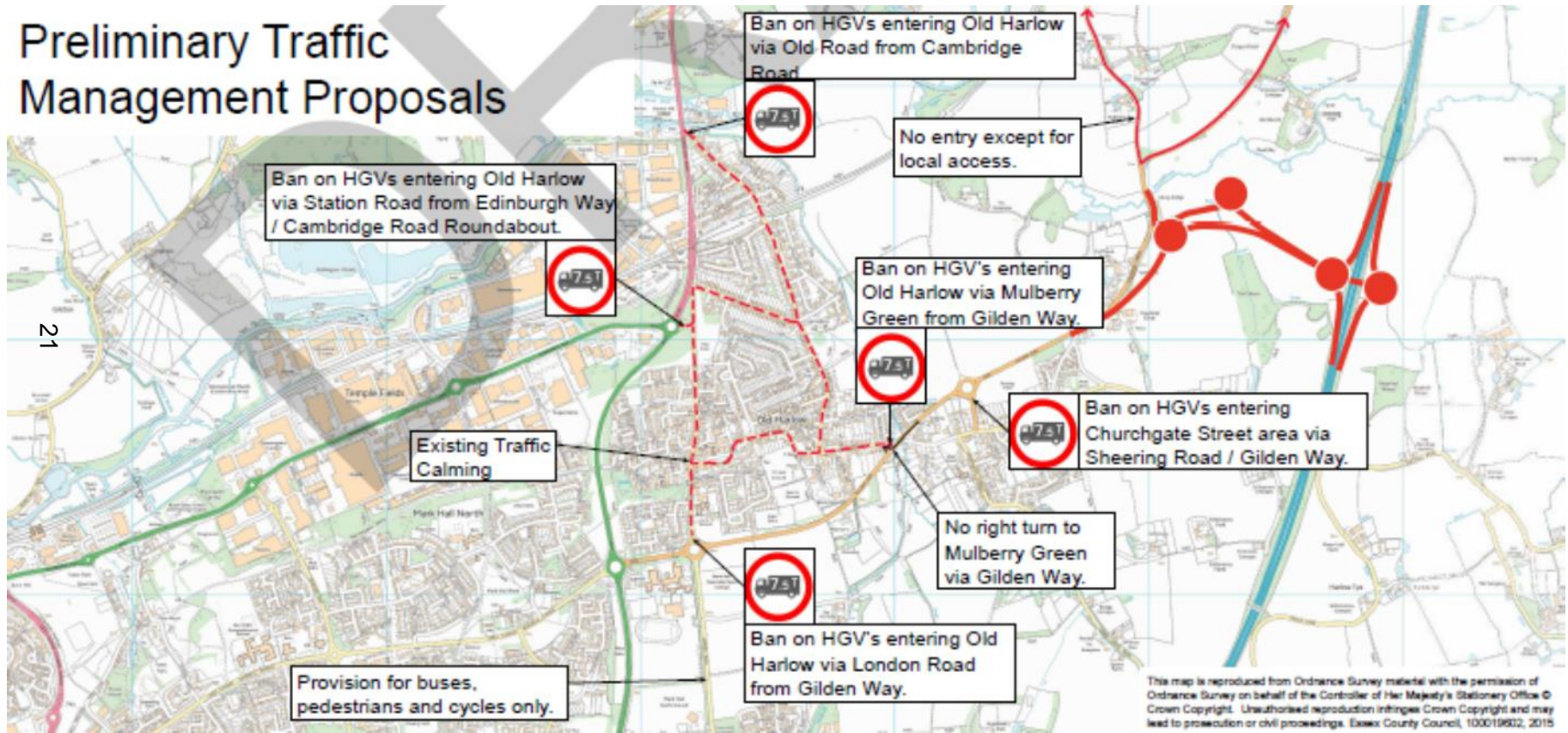
Harlowbury development

Secondary access to Harlowbury

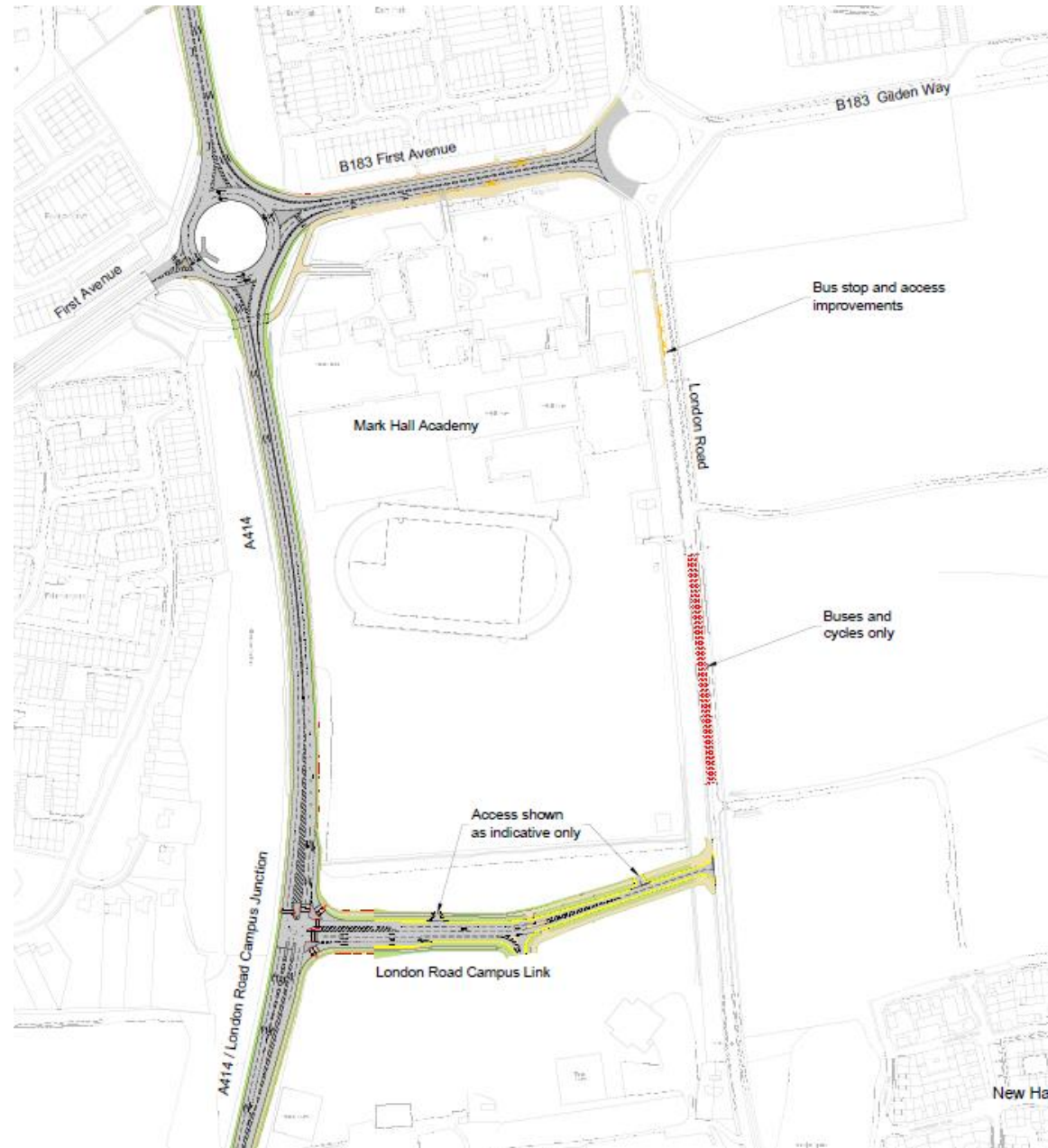
Reproduction from the Ordnance Survey Map with the permission of the controller of Her Majesty's stationery office Crown copyright reserved Licence No. AL 100019602



# Preliminary Traffic Management Proposals



21



# Scheme Overview:

## New Hall A414 First Avenue London Road

## HARLOW DISTRICT COUNCIL WITH ESSEX COUNTY COUNCIL LOCAL HIGHWAY PANEL – 28<sup>th</sup> MARCH 2018 REPORT 1 – APPROVED SCHEMES UPDATE

The following report provides an update on the current position of all of the schemes which the Harlow Members had recommended for inclusion in the 2017/18 programme.

Also identified are the schemes provisionally agreed by the Members in the January Panel meeting which will form the 2018-19 programme subject to formal approval by the Cabinet Member for Highways.

The 2018/19 Capital Budget for the twelve Local Highway Panels was agreed by ECC at their full Council meeting in February 2018. For the Harlow District Local Highways Panel (LHP) the budget will be £243,500, the same amount as 2017/18.

For the information of the Panel our Safer Roads team has identified one Safer Roads scheme within the District of Harlow to be implemented in 2018/19.

Members are also reminded that the costs supplied are estimates only and there is the possibility that a final scheme cost could change significantly dependant on issues which may arise especially during detailed design and construction. The estimated scheme costs on the Rolling Programme/Potential Scheme List have been reviewed and adjusted as necessary to reflect this.

The 2018-19 capital budget summary is as follows:

Budget summary 2018-19	
Capital Budget	£243,500
Value of schemes prioritised in the January panel	*£154,500
Re-profiled schemes from 17/18 to 18/19	£0
Safer Roads Schemes	£7,500
2018/19 Capital Budget still to allocate	<b>£81,500</b>

\* This value does not include two schemes which were provisionally prioritised at the January meeting but for which costs were not available at the time.

**HARLOW DISTRICT COUNCIL WITH ESSEX COUNTY COUNCIL**  
**LOCAL HIGHWAYS PANEL - 28th MARCH 2018**  
**Report 1: APPROVED SCHEMES**

Key:

Completed schemes
Cancelled schemes

REF	Scheme Name	Scheme Stage	Finish	Cost Code	Scheme Category	Works Description	Allocated Budget	Comments
1	Fourth Ave junction with Haydens Rd, Harlow - Casualty reduction improvements	Total scheme	COMPLETE	LHAR171001	Safer Roads	Implementation of signing and lining as identified in the casualty reduction report	£18,000	
2	A414 RAB junction with Church Langley Way, Harlow - Casualty reduction improvements	Total scheme	COMPLETE	LHAR171002	Safer Roads	Implementation of signing and lining as identified in the casualty reduction report	£12,000	
3	Passmore Area Cycle Improvements	Design	COMPLETE	LHAR164001	Cycling	Cycling facilities	£5,000	A design has been completed looking at the existing cycleway facilities between Third Avenue and Staple Tye.
4	Town wide, pedestrian signage	Total scheme	CANCELLED	LHAR142011	Walking	Implementation of the generic pedestrian signage scheme from the 2013-14 feasibility study	£25,000	Members agreed to cancel this scheme at the January meeting due to the land issues surrounding the locations.
5	Various Locations, Harlow	Design	COMPLETE	LHAR004001	Cycling	Cycling facilities	£3,000	Due to most of the locations that had been identified not being on ECC land only the site outside the library at Old Harlow will be progressed.
6	Pottersfield - Congestion parking	Design	COMPLETE	LHAR155021	Traffic Management	Design and legal works for Pottersfield congestion scheme	£10,000	
7	Hamstel Road - Tiger crossing	Design	COMPLETE	LHAR163002	Walking	Detailed design and TRO for a zebra crossing in the vicinity of the hospital	£5,000	The design is being amended for a tiger crossing to facilitate the better movement for cyclists
8	Parsloe Road - VAS	Total scheme	COMPLETE	LHAR162002	Traffic Management	2nd VAS for northbound traffic	£8,500	
10	Tawneys Road - Zebra raised table	Total scheme	COMPLETE	LHAR172002	Traffic Management	Implementation of traffic calming measures in the vicinity of William Martin School	£40,000	
11	Hodings Road - TMI	Total scheme	COMPLETE	LHAR172001	Traffic Management	Implementation of measures to alert road users to Pemberley Academy	£13,662	The original design has been amended and following discussions with members will now incorporate additional pedestrian guard rail. The works will be installed over the February half-term holiday.
12	Fourth Avenue junction with North Gate roundabout	Feasibility	COMPLETE	LHAR162009	Traffic Management	Scheme to look at redesigning the roundabout	£4,000	
13	150035046003 - Canons Gate (opp) - Hobtoe Road - Bus shelter	Total scheme	COMPLETE	LHAR165029	Passenger Transport	Replace Bus Shelter	£6,500	
14	1500IM333 - Hobtoe Road (SE-bound) -Hobtoe Road - Bus shelter	Total scheme	COMPLETE	LHAR165033	Passenger Transport	Replace Bus Shelter	£6,500	
15	Tumbler Road - Layby improvements - Layby improvements	Feasibility	Quarter 4	LHAR162017	Traffic Management	Request for layby improvements to accommodate echelon parking	£5,000	Awaiting the completion of the feasibility study
16	Trotters Road on the approach to Pear Tree Mead Primary School - Wig wag	Total scheme	CANCELLED	LHAR166001	School Crossing Patrol	Replacement school wig wag unit	£3,000	The unit which had been reported as malfunctioning is working again without the need for repairs.
17	Hobtoe Road, Harlow outside the PH - Bus shelter	Total scheme	COMPLETE	LHAR175001	Passenger Transport	New shelter and bus stop infrastructure	£6,500	



**HARLOW DISTRICT COUNCIL WITH ESSEX COUNTY COUNCIL**  
**LOCAL HIGHWAYS PANEL - 28th MARCH 2018**  
**Report 1: APPROVED SCHEMES**

Key:

Completed schemes
Cancelled schemes

REF	Scheme Name	Scheme Stage	Finish	Cost Code	Scheme Category	Works Description	Allocated Budget	Comments
18	1500IM2614B - Garden Tiger (o/s) - Maddox Road - Bus shelter	Total scheme	COMPLETE	LHAR165032	Passenger Transport	Replace Bus Shelter	£6,500	This scheme was one of three Passenger Transport schemes brought forward from the rolling programme to replace the Phelps Road scheme which Members agreed to cancel.
19	1500IM2465 - Hull Grove (opp) - Broadley Road - Bus shelter	Total scheme	COMPLETE	LHAR165031	Passenger Transport	Replace Bus Shelter	£6,500	This scheme was one of three Passenger Transport schemes brought forward from the rolling programme to replace the Phelps Road scheme which Members agreed to cancel.
20	1500IM2613 - Small Copper (opp) - Momples Road - Bus shelter	Total scheme	COMPLETE	LHAR165024	Passenger Transport	Replace Bus Shelter	£6,500	This scheme was one of three Passenger Transport schemes brought forward from the rolling programme to replace the Phelps Road scheme which Members agreed to cancel.
21	Golden Swift - Harberts Road - NE bound	Total scheme	COMPLETE	LHAR175003	Passenger Transport	Replacement bus shelter	£6,500	This scheme was one of three new Passenger Transport schemes which were brought into the programme to replace the Phelps Road scheme which Members agreed to cancel.
22	Kingdom Hall - Hodings Road eastbound	Total scheme	COMPLETE	LHAR175004	Passenger Transport	Replacement bus shelter	£6,500	This scheme was one of three new Passenger Transport schemes which were brought into the programme to replace the Phelps Road scheme which Members agreed to cancel.
23	Northbrooks - Harberts Road NW Bound	Total scheme	COMPLETE	LHAR175005	Passenger Transport	Replacement bus shelter	£6,500	This scheme was one of three new Passenger Transport schemes which were brought into the programme to replace the Phelps Road scheme which Members agreed to cancel.

**HARLOW DISTRICT COUNCIL WITH ESSEX COUNTY COUNCIL**  
**LOCAL HIGHWAYS PANEL - 28th MARCH 2018**  
**Report 1: APPROVED SCHEMES**

Key:

Completed schemes
Cancelled schemes

REF	Scheme Name	Scheme Stage	Finish	Cost Code	Scheme Category	Works Description	Allocated Budget	Comments
<b>Approved Schemes- 2018/19 Delivery - Safer Road Schemes</b>								
24	First Avenue jw Orchard Croft	Design	2018-19 delivery	LHAR181001	Safer Roads	Design to look at: - Bus lane length reduction - New traffic island - Right turn lane	£7,500	Casualty Reduction scheme

<b>Approved Schemes - Prioritised for 2018/19</b>								
25	Tawneys Road on the approach to William Martin school - 20mph	Total scheme	2018-19 delivery	LHAR172003	Traffic Management	Advisory 20mph limit on the approach to the school following on from feasibility study undertaken in 2016-17	£12,000	At the January meeting, the members agreed to progress this as a priority scheme.
26	Parsloe Road junction with Phelps Rd and Markwell Wood	Implementation	2018-19 delivery	LHAR162001	Traffic Management	Implementation of scheme following on from feasibility study undertaken in 2015-16	£82,500	Members agreed at the January meeting to bring this project back into the programme having postponed the delivery in 2017-18
27	<b>Hamstel Road - Tiger crossing</b>	<b>Implementation</b>	<b>2018-19 delivery</b>	<b>LHAR173002</b>	<b>Walking</b>	<b>Implementation of tiger crossing in the vicinity of the hospital</b>	<b>£62,000</b>	<b>At the January meeting, the members agreed to progress this as a priority scheme though the costs were not available at the time.</b>
28	Fourth Avenue junction with North Gate - roundabout works	Total scheme	2018-19 delivery	LHAR162009	Traffic Management	Implementation of works as identified in the feasibility study undertaken in 2017-18 to look at redesigning the roundabout	£41,000	At the January meeting, the members agreed to progress this as a priority scheme though at the time the available options and associated costs were not available. Members need to make a decision on which option to pursue.
29	Pottersfield - Congestion parking	Implementation	2018-19 delivery	LHAR172004	Traffic Management	Installation of the Pottersfield parking works as designed in 2017-18	£60,000	At the January meeting, the members agreed to progress this as a priority scheme to the value of £60,000. The estimated cost for the scheme in its entirety has been revised to £80,500. Members need to make a decision on which schemes to progress as there is not sufficient budget to progress everything that has been prioritised.

## HARLOW DISTRICT COUNCIL WITH ESSEX COUNTY COUNCIL LOCAL HIGHWAY PANEL – 28<sup>th</sup> MARCH 2018 REPORT 2 – POTENTIAL CAPITAL SCHEMES

At the January Panel meeting members recommended schemes to the value of £154,500 but also prioritised two schemes for which the costs were to be returned. With all costs now available a decision needs to be made on prioritising the final budget with a sum of £81,500 to be allocated.

The following potential scheme list identifies all of the scheme requests which have been received for the consideration of the Harlow District Local Highways Panel. The Members are asked to review these schemes, finalise their scheme funding recommendations for the schemes they wish to see delivered in 2018/19 and remove any schemes the Panel would not wish to consider for future funding.

The breakdown of scheme types available for consideration in 2018/19 is as below:

Scheme Type	Total Estimated Costs
Traffic Management	£75,500
Walking	£172,000
Passenger Transport	£127,500
Cycling	£0 (costs to be returned)
Public Rights of Way	£0
<b>Total</b>	<b>£375,000</b>

The RAG column acknowledges what the status of the request is as follows:

<b>G</b>	The scheme has been validated as being feasible and is available for consideration
<b>A</b>	The scheme has previously been approved for a feasibility study and the results are awaited before the scheme can be fully considered
<b>R</b>	A scheme request has been received but is against ECC policy or there is no appropriate engineering solution
<b>V</b>	A scheme request has been received and is in the initial validation process

## Traffic Management

Total Value of schemes	£75,500
------------------------	---------

Ref	Location	Description	Problem	Cost Code	Estimated cost	Comments	RAG
1	Junction in between 171 and 100 Abbotsweld - Road markings	Request to look into road markings at the junction	People are not giving way at the junction and are treating it like a bend	LHAR162008	£3,000		<b>G</b>
2	Maddox Road - Traffic calming amendments	Request to look into the existing traffic calming measures	The rubber cushions are deteriorating and people are not slowing down for them	LHAR162015	£5,500	Officers recommendations are to undertake speed surveys in the first instance to ascertain the extent of the speeding issues prior to consideration of a study.	<b>G</b>
3	Maddox Road - Layby improvements	Request for layby improvements to accommodate echelon parking	Vehicles are parking along Maddox Road and causing congestion	LHAR162016	£5,500	The validation has recommended proceeding to a feasibility study to identify possible improvements.	<b>G</b>
4	Kingsland outside 149 and 91, Harlow - Parking	Congestion parking	There is no off street parking which is causing congestion	LHAR162018	£6,500	The validation has identified verge areas within Kingsland which could be converted to improve parking. The land however is not highways so land acquisition would be required in addition to the feasibility study.	<b>G</b>
5	Opposite Bushey Croft, Harlow - Parking	Congestion parking	There is no off street parking which is causing congestion	LHAR162020	£5,500		<b>G</b>
6	Water Gardens junction with Third Avenue	Feasibility to look at improving the exit from the Water Gardens for traffic wanting to turn right	Vehicles wanting to turn right need to turn left and go to the Leisurezone roundabout to come back on themselves but are finding the route blocked by traffic queuing in the right lane to go up Second Avenue	LHAR172007	TBC	In validation.	<b>V</b>

Ref	Location	Description	Problem	Cost Code	Estimated cost	Comments	RAG
7	Old Road junction with Cambridge Road	feasibility to look at deterring the no right turn out of Old Road onto Cambridge Road	Vehicles are either ignoring the no right turn or the message is not clear enough causing them to come into conflict with pedestrians on the crossing	LHAR172006	-	The validation has identified that there is sufficient advance signage to indicate to vehicles that they shouldn't make the right turn out of the junction. The physical layout on Old Road also makes it clear you should be turning left so this is really an enforcement issue.	R
8	Tracy's Road outside Holy Cross Primary School	Request to look at installing bollards on the footway to mirror what is on the opposite side	Traffic making drop off and pick ups at Holy Cross and Passmores School are causing a danger to pedestrians by mounting the footway. Holy Cross have reported several near misses involving their pupils	LHAR172009	TBC	In validation.	V
9	Paringdon Road and Ployters Road traffic calming review	Request to review existing traffic calming for possible amendments	The existing features were installed a number of years ago but it is felt that they are no longer appropriate for the roads and need their effectiveness to be re-evaluated	LHAR172012	TBC	Surveys to be undertaken after the Easter holidays.	V
10	Velizy Avenue bus lane	Request to look at private hire vehicles using the bus lane	Alternative route adding to much time to taxi journeys	LHAR172010	TBC	The validation has identified that subject to consultation it would be viable to allow taxis to use the bus lane. There are however plans for the bus	V
11	Church Langley junction with A414	Request to look at improving access into Church Langley	Congestion problems caused by queuing traffic preventing vehicles from getting in and out of Church Langley	LHAR172011	TBC		V
12	Fourth Avenue junction with North Gate roundabout	Scheme to look at redesigning the roundabout	Existing roundabout is in a serious state of disrepair having been hit in numerous collisions and requires reconstruction both as a way of encouraging slower approach speeds but also to reduce the need for ongoing maintenance which would currently be needed	LHAR162009	TBC	Awaiting the completion of the feasibility study to ascertain possible measures to progress.	V
13	Pottersfield congestion parking	Installation of the Pottersfield parking works as designed in 2017-18	The road is very congested with parked vehicles causing problems for emergency vehicles and the refuge truck to travel through	LHAR172004	TBC	Awaiting the completion of the design and legal works to understand the cost.	V
14	Waterhouse Moor - parking improvements	Request to consider amending off road land for parking spaces in the vicinity of Waterhouse Towers	The way that vehicles are parking is causing	LHAR172013	£5,500	The validation has identified that it would be feasible to look at converting the grassed area to enable vehicles to be moved from the dangerous bend.	G

Ref	Location	Description	Problem	Cost Code	Estimated cost	Comments	RAG
15	Willowfield - layby improvement	Feasibility study to look at either widening the existing layby to better facilitate echelon parking or look to introduce a one way system	The current parking arrangement does not allow for two way traffic	LHAR162010	£6,500		<b>G</b>
16	Potter Street - Review of existing 20mph zone	Request to look into the existing 20mph zone and improving existing traffic calming measures	Existing traffic calming features are not reducing speeds	LHAR162014	£5,500		<b>G</b>
17	Fourth Avenue junction with North Gate -Roundabout works	Implementation of works as identified in the feasibility study undertaken in 2017-18 to look at redesigning the roundabout	Existing roundabout is in a serious state of disrepair having been hit in numerous collisions and requires reconstruction both as a way of encouraging slower approach speeds but also to reduce the need for ongoing maintenance which would currently be needed	LHAR162009	£32,000	Members prioritised this scheme at the January Panel meeting however discussions need to be had regarding the options presented in the feasibility study.	<b>G</b>
18	Longwood School, Paringdon Road -	Request to look at barriers and restrictions outside the	Dangerous and inconsiderate parking during school pick up and drop off	LHAR182001	TBC	In validation	<b>V</b>

## Walking

<b>Total Value of schemes</b>	<b>£172,000</b>
-------------------------------	-----------------

Ref	Location	Description	Problem	Scheme stage	Cost Code	Estimated cost	Comments	RAG
1	Shops going into Hamstel - pram crossings	1 pair of pram crossings	Replace existing pram crossings	Total scheme	LHAR163005	£5,500		G
2	Rycroft junction with Collins Meadows - pram	1 pair of pram crossings	pram crossings to help people when crossing the road	Total scheme	LHAR163006	£5,500		G
3	Shawbridge junction with Southam Lodge - pram crossings	1 pair of pram crossings	pram crossings to help people when crossing the road	Total scheme	LHAR163007	£5,500		G
4	Shawbridge junction with Holly Field - pram	1 drop kerb to match the one on the opposite side of the road	Drop kerb to help people when crossing the road	Total scheme	LHAR163009	£5,500		G
5	Holly Field junction with Holly Field - pram crossings	1 pair of pram crossings	pram crossings to help people when crossing the road	Total scheme	LHAR163010	£5,500		G
6	Commonside junction with Fern Hill Lane - pram crossings	1 drop kerb to match the one on the opposite side of the road	Drop kerb to help people when crossing the road	Total scheme	LHAR163011	£4,000		G
7	Rundells 78 - 79 - pram crossings	1 pair of pram crossings	pram crossings to help people when crossing the	Total scheme	LHAR163012	£5,500		G
8	Hare Street junction with Spring Close - pram crossings	1 pair of pram crossings	pram crossings to help people when crossing the road	Total scheme	LHAR163013	£5,500		G
9	Helions Road Junction with Harberts Road - pram crossings	1 pair of pram crossings	pram crossings to help people when crossing the road	Total scheme	LHAR163014	£5,500		G
10	Willowfield junction with Tendring Road - pram crossings	2 x pairs of pram crossings	pram crossings to help people when crossing the road	Total scheme	LHAR163015	£9,500		G

Ref	Location	Description	Problem	Scheme stage	Cost Code	Estimated cost	Comments	RAG
11	Maunds Hatch junction with Maunds Hatch - pram crossings	1 pair of pram crossings in the vicinity of the Co-Op	pram crossings to help people when crossing the road	Total scheme	LHAR163019	£5,500		<b>G</b>
12	Tendring Road junction with Partridge Road - Drop Kerb	1 pair of pram crossings	pram crossings to help people when crossing the road	Total scheme	LHAR163021	£5,500		<b>G</b>
13	Tawneys Road junction with The Fairways - pram crossings	1 pair of pram crossings	pram crossings to help people when crossing the road	Total scheme	LHAR163023	£6,500	In validation.	<b>G</b>
14	Muskham Road junction with First Avenue - Pedestrian Refuge	Request to install a pedestrian refuge down Muskham Road at the junction to help pedestrians cross the road	Pedestrians are struggling to cross the road at this location	Total scheme	LHAR163025	TBC	In validation.	<b>V</b>
15	Waterhouse Moor - pram crossings	Request for 2 x pairs of pram crossings down Waterhouse Moor	pram crossings to help people cross the road	Total scheme	LHAR163026	£11,000		<b>G</b>
16	Finchmoor - pram crossings	Request for additional pram crossings down Finchmoor	pram crossings to help people cross the road	Total scheme	LHAR163028	TBC	In validation.	<b>V</b>
17	Abercrombie Way junction with Woodcroft - pram crossings	1 pair of pram crossings	pram crossings to help people cross the road	Total scheme	LHAR163029	TBC	In validation.	<b>V</b>
18	Harberts Road junction with Fourth Avenue	Request to improve the current pedestrian refuge	The current pedestrian refuge is restricted for pedestrians as there is a high mast beacon in the middle	Feasibility	LHAR163030	TBC	In validation.	<b>V</b>
19	Muskham Road outside the Museum - drop	1 single drop kerb to take pedestrians across to the Museum	There is a drop on one side of the road but not to	Total scheme	LHAR163032	TBC	In validation.	<b>V</b>
20	Church End between 113 and 116	New pram crossing	There are no pram crossings leading from the car park area to the	Total scheme	LHAR173003	£5,000		<b>G</b>



Ref	Location	Description	Problem	Scheme stage	Cost Code	Estimated cost	Comments	RAG
21	Church Langley Way - between Minton Lane and Tickenhall Drive	Request for a zebra / tiger crossing	Difficulty for pedestrians to cross the road. The requested location would link up two cycleways	Feasibility	LHAR173004	TBC	The PV2 has been completed and the site falls marginally short of meeting the criteria. A decision from the Cabinet Member would be required to proceed.	R
22	Tawneys Road, close to the shops	Request for a zebra crossing	Many local residents are elderly and are experiencing problems crossing from Tye Green Village to the shops	Feasibility	LHAR173005	£8,500	A PV2 assessment has been undertaken and the site would meet the criteria for a zebra crossing.	G
23	In the vicinity of 121 Woodcroft	Pedestrian pram crossing	No option for mobility impaired to easily mount the footway	Total scheme	LAH173006	£5,500		G
24	Entrance to Church Gate School - Pram crossings	1 pair of pram crossings	The entrance to the school has no pram crossings making it difficult for people pushing a pram/ wheelchair to cross the road	Total scheme	LHAR163003	£4,000		G
25	Miles Close junction with Herbert's- Pram crossings	1 pair of pram crossings	pram crossings to help people when crossing the road	Total scheme	LHAR163004	£5,500		G
26	Shawbridge junction next to sign for houses 132-152- pram crossings	1 pair of pram crossings	pram crossings to help people when crossing the road	Total scheme	LHAR163008	£5,500		G
27	Barn Mead - Pram crossings	Request for pram crossings around the whole Barn Mead estate	pram crossings to help people when crossing the road	Total scheme	LHAR163020	£52,000	The estimated cost would incorporate installing pram crossings around the whole	G

## Cycling

Total Value of schemes	£0
------------------------	----

Ref	Location	Description	Problem	Scheme stage	Cost Code	Estimated Cost	Comments	RAG
1	Passmore Area	Implementation of cycle improvements in the Passmore Area as identified in the feasibility study being progressed in 2017-18	Cycle routes not connecting and general improvements require investigating	Design	LHAR164001	TBC	Awaiting the completion of the feasibility study to ascertain possible measures to progress.	A
2	Old Harlow - cycle racks	Implementation of cycle facilities as designed in 2017-18		Implementation	LHAR004001	TBC	Awaiting confirmation of cost for the cycle racks outside the library in Old Harlow.	A

# Passenger Transport

Total Value of schemes	<b>£127,500</b>
------------------------	-----------------

Ref	Location	Description	Problem	Requested by	Cost Code	Estimated cost	Comments	RAG
1	Peterswood School (S-bound) - Replacement bus shelter	Replacement bus shelter	Existing shelter is badly deteriorated	PT team	LHAR175006	£8,500		G
2	Peterswood School (NW-bound)	Replacement bus shelter	Existing shelter is badly deteriorated	PT team	LHAR175007	£8,500		G
3	Shopping Centre (N Bound)	Replacement bus shelter	Existing shelter is badly deteriorated	PT team	LHAR175008	£8,500		G
4	Shopping Centre (S Bound)	Replacement bus shelter	Existing shelter is badly deteriorated	PT team	LHAR175009	£8,500		G
5	Fir Park	Replacement bus shelter	Existing shelter is badly deteriorated	PT team	LHAR175010	£8,500		G
6	Pollards Hatch (NW Bound)	Replacement bus shelter	Existing shelter is badly deteriorated	PT team	LHAR175011	£8,500		G
7	Ladyshot (opp)	Replacement bus shelter	Existing shelter is badly deteriorated	PT team	LHAR175012	£8,500		G
8	Barleycroft (N Bound)	Replacement bus shelter	Existing shelter is badly deteriorated	PT team	LHAR175013	£8,500		G
9	Barleycroft (S Bound)	Replacement bus shelter	Existing shelter is badly deteriorated	PT team	LHAR175014	£8,500		G
10	Three Horseshoes	Replacement bus shelter	Existing shelter is badly deteriorated	PT team	LHAR175015	£8,500		G
11	Salvation Army (o/s)	Replacement bus shelter	Existing shelter is badly deteriorated	PT team	LHAR175016	£8,500		G
12	The Hornbeams (adj)	Replacement bus shelter	Existing shelter is badly deteriorated	PT team	LHAR175017	£8,500		G
13	The Herald o/s	Replacement bus shelter	Existing shelter is badly deteriorated	PT team	LHAR175018	£8,500		G

# Passenger Transport

Total Value of schemes	£127,500
------------------------	----------

Ref	Location	Description	Problem	Requested by	Cost Code	Estimated cost	Comments	RAG
14	Spinning Wheel Mead	Replacement bus shelter	Existing shelter is badly deteriorated	PT team	LHAR175019	£8,500		G
15	The Readings o/s	Replacement bus shelter	Existing shelter is badly deteriorated	PT team	LHAR175020	£8,500		G
16	Partridge Road, close to Five Acres - Pram crossing	Request for dropped kerbs to allow bus users to access the bus stop and new bus cage	Currently no provision for pedestrians with mobility issues to cross the road	PT team	LHAR185001	TBC	In validation	V
17	Five Acres - New bus shelter (1500IM1402B)	New bus shelter and cage	Currently no provision for pedestrians to shelter	PT team	LHAR185002	TBC	In validation	V

**REPORT 3 - HARLOW HIGHWAY RANGERS**

REF	Parish/Ward	Road Name	Location	Type of Work Required	Comments	Confirm Number	Date Requested	Date Completed	STATUS
LHAR17-11-01	Harlow District	Ashworth Place	Opp 66 - 68.	Vegetation trimming	Overgrown vegetation overhanging the footway. <b>Done By Others</b>	3165239	01/11/2017	06/02/2018	COMPLETED
LHAR17-11-02	Harlow District	Aynsley Gardens	S/O 50.	VRGE	Approximately 1*0 x 6*0 Metres Square. Verge. Topsoil.	3164943	02/11/2017	06/02/2018	COMPLETED
LHAR17-11-03	Harlow District	Doulton Close	L/C: 9127A	Vegetation trimming	Overgrown vegetation overhanging the footway.	3173008	28/11/2017	06/02/2018	COMPLETED
LHAR17-11-04	Harlow District	Elwood	R/O 9.	Vegetation trimming	Overgrown vegetation overhanging the footway.	3167197	07/11/2017		
LHAR17-11-05	Harlow District	Elwood	S/O 33.	Vegetation trimming	Overgrown vegetation overhanging the footway.	3167215	07/11/2017	06/02/2018	COMPLETED
LHAR17-11-06	Harlow District	High Street	O/S 2.	Other (explain in notes)	Approximately 0*04 x 1*0 Metre Square. footway. Flagstone Paving.	3167976	09/11/2017	07/02/2018	COMPLETED
LHAR17-11-07	Harlow District	High Street	Between 18 'Joe Jennings & 19 ' BengalCottage'.	Other (explain in notes)	(Pointing). Approximately 0*03 x 7*0 . footway. Flagstone Paving.	3167984	09/11/2017	07/02/2018	COMPLETED
LHAR17-11-08	Harlow District	High Street	S/O Channel Grill. Between Library & 29 'Cutting Edge'.	Other (explain in notes)	(Pointing). Approximately 0*03 x 10*0 Metre Square. footway. Flagstone Paving.	3167991	09/11/2017	07/02/2018	COMPLETED
LHAR17-11-09	Harlow District	High Street	S/O Channel Grill. O/S 50.	Other (explain in notes)	(Pointing). Approximately 0*03 x 3*0 Metre Square. footway. Flagstone Paving.	3167992	09/11/2017	07/02/2018	COMPLETED
LHAR17-11-10	Harlow District	Howard Way	Opposite entrance to Altham Grove car park. Sign attached to l c 545	Sign cleaning	sign dirty and covered in moss. <b>No Sign on 545 but cleaned signs on 546 &amp; 547</b>	3165162	01/11/2017	05/02/2018	COMPLETED
LHAR17-11-11	Harlow District	Kiln Lane	R/O 15 Tickenhall Drive.	Vegetation trimming	Tree leaning into footway causing obstruction.	3173171	28/11/2017	07/02/2018	COMPLETED
LHAR17-11-12	Harlow District	Kiln Lane	Opp L/C: 8680.	Vegetation trimming	Tree leaning into cycleway causing obstruction.	3173172	28/11/2017	07/02/2018	COMPLETED
LHAR17-11-13	Harlow District	Kiln Lane	Opp L/C: 8681.	Verge repair	Knee Rail & Posts Damaged. Verge. Topsoil.	3173174	28/11/2017	07/02/2018	COMPLETED
LHAR17-11-14	Harlow District	Lane End	S/O 107 to S/O 98. Wedgwood Drive.	Vegetation trimming	Overgrown vegetation overhanging the footway.	3167159	07/11/2017	06/01/2018	COMPLETED
LHAR17-11-15	Harlow District	Lane End	S/O 97 to R/O Flats 86 - 94.	Vegetation trimming	Overgrown vegetation overhanging the footway. <b>Done By Others</b>	3167166	07/11/2017	06/02/2018	COMPLETED
LHAR17-11-16	Harlow District	Lane End	Lane End to Old Hall Rise.	Vegetation trimming	Overgrown vegetation overhanging the footway. <b>Done By Others</b>	3167175	07/11/2017	06/02/2018	COMPLETED
LHAR17-11-17	Harlow District	Lane End	Between 3 & 4 Davenportport.	Vegetation trimming	Overgrown vegetation overhanging the Footway. <b>Done By Others</b>	3168705	13/11/2017	06/02/2018	COMPLETED
LHAR17-11-18	Harlow District	Minton Lane	O/S 23 - 26 Chamberlain Close.	Vegetation trimming	Overgrown vegetation overhanging the footway.	3165349	02/11/2017	06/02/2018	COMPLETED
LHAR17-11-19	Harlow District	Minton Lane	S/O 18 Chamberlain Close.	Vegetation trimming	Overgrown vegetation overhanging the footway. <b>Done By Others</b>	3165350	02/11/2017	06/02/2018	COMPLETED
LHAR17-11-20	Harlow District	Mulberry Green	Opp L/C: 3262 to J/W Watlington Road.	Vegetation trimming	Overgrown vegetation overhanging the footway.	3171625	22/11/2017	06/02/2018	COMPLETED
LHAR17-11-21	Harlow District	Pilkingtons	O/S 53.	Vegetation trimming	Overgrown vegetation overhanging the footway.	3170236	17/11/2017		
LHAR17-11-22	Harlow District	The Chantry	Nearest property 86	Other (explain in notes)	2 kerbs displaced and laying in vehicle turning area	3170060	16/11/2017	05/02/2018	COMPLETED
LHAR17-11-23	Harlow District	Westfield	Opp 270.	Vegetation trimming	Overgrown vegetation around lamp column.	3165063	01/11/2017	06/04/2018	COMPLETED